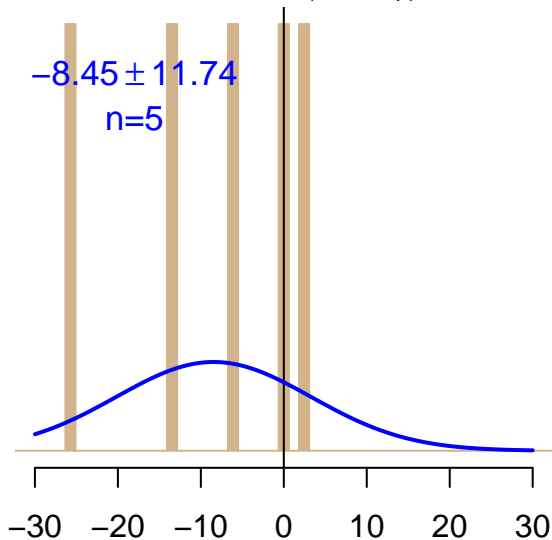


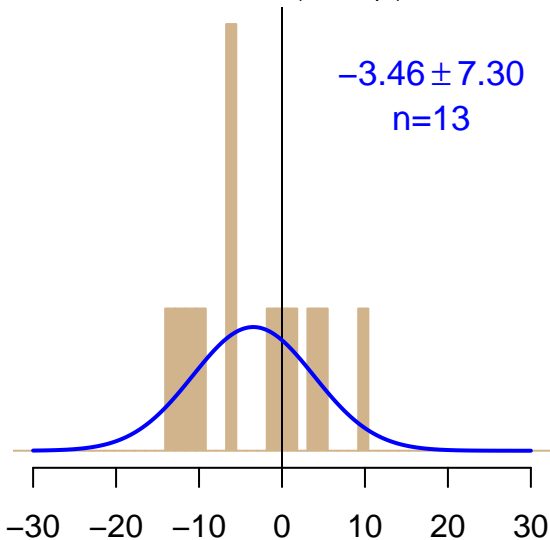
NH "Summer" (Jun–Sep)

-8.45 ± 11.74
 $n=5$



NH "Winter" (Nov–Apr)

-3.46 ± 7.30
 $n=13$



Simulated–observed $\Delta[\text{CO}_2]$, $\mu\text{mol mol}^{-1}$

Data from 05–Oct–2009 to 24–Oct–2019

