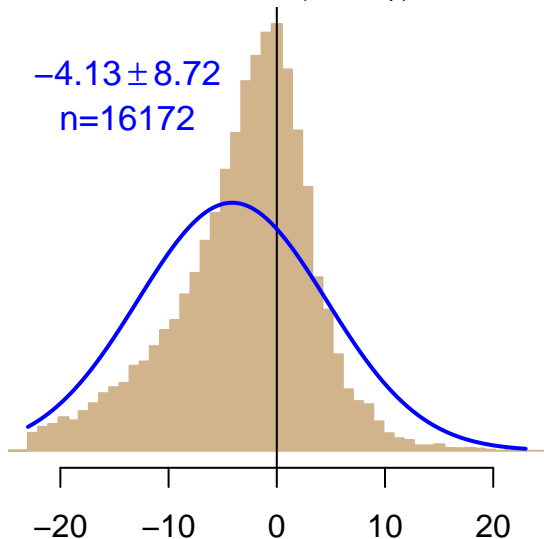


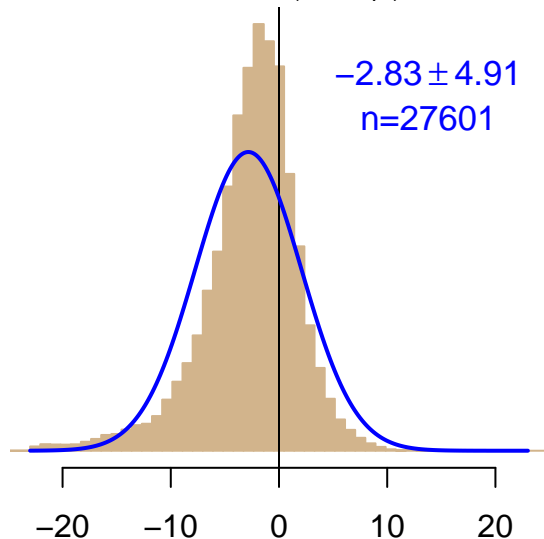
NH "Summer" (Jun–Sep)

$-4.13 \pm 8.72$   
 $n=16172$



NH "Winter" (Nov–Apr)

$-2.83 \pm 4.91$   
 $n=27601$



Simulated–observed  $\Delta[\text{CO}_2]$ ,  $\mu\text{mol mol}^{-1}$

Data from 04–Sep–2004 to 29–Jul–2013



*co2\_igr\_tower-insitu\_20\_allvalid-24magl*  
*CT2022, created 20–Jan–2023 18:33*