

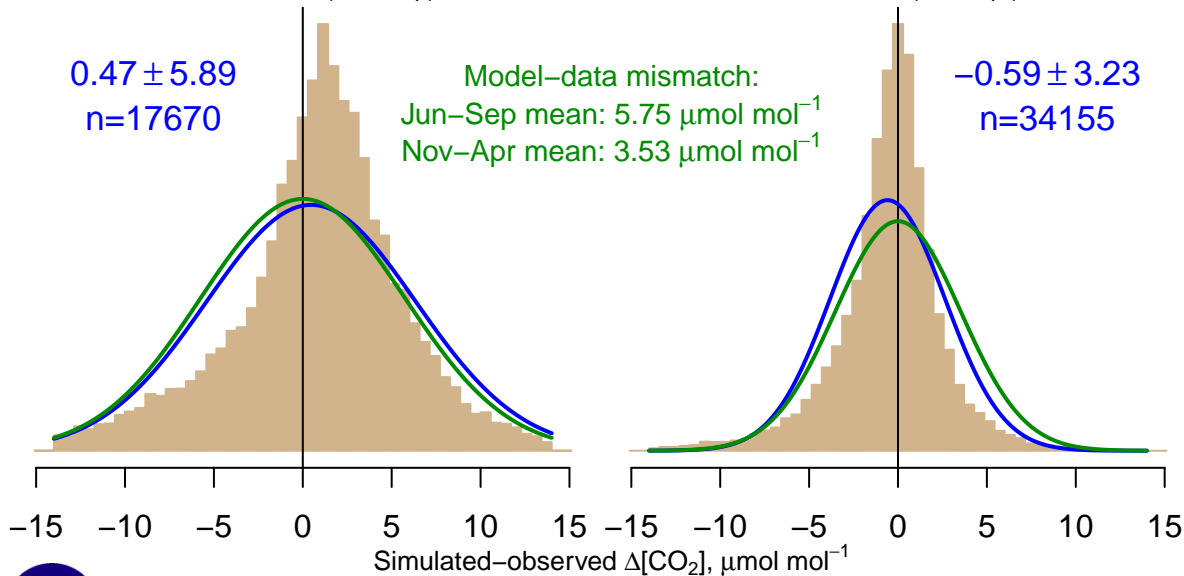
NH "Summer" (Jun–Sep)

0.47 ± 5.89
 $n=17670$

Model–data mismatch:
Jun–Sep mean: $5.75 \mu\text{mol mol}^{-1}$
Nov–Apr mean: $3.53 \mu\text{mol mol}^{-1}$

NH "Winter" (Nov–Apr)

-0.59 ± 3.23
 $n=34155$



Data from 22–Dec–2006 to 31–May–2017

